

Linde E25-01

Capacity: 2500 kg

Mast type: Duplex

Lift height: 3000 mm

YOM: 2017

Running hours: 4548

Engine type: Electric

Tech. Condition: very good

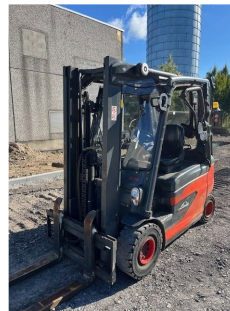
Visual condition: very good

Com Nr.: IH00390

Battery: 2017, 80V, 500Ah, 80 - 100%

Extras:

Side Shift 3rd valve Weatherproof cover Heater



Price: on request (Subject to prior sale)