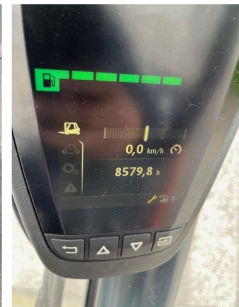


## Linde H20T

**Capacity:** 2000 kg  
**Mast type:** Triplex  
**Lift height:** 4625 mm  
**YOM:** 2019  
**Running hours:** 8579  
**Engine type:** LPG  
**Tech. Condition:** good  
**Visual condition:** good

**Com Nr.:** IH00362

**Extras:**  
3rd valve 4th valve



**Price: on request** (Subject to prior sale)