

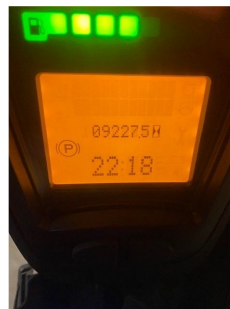
## Linde H45T-02

**Capacity:** 4500 kg  
**Mast type:** Duplex Standard  
**Lift height:** 5000 mm  
**YOM:** 2017  
**Running hours:** 9227  
**Engine type:** LPG  
**Tech. Condition:** very good  
**Visual condition:** very good

**Com Nr.:** IH00254

### Extras:

3rd valve 4th valve Worklight back Worklight front Heater Full cabin Safety Pilot



**Price: on request** (Subject to prior sale)